

Heat Shrink Breakout, Boots & Shapes

upto 36 kV



IB - Insulating breakout seal and protect cable and conduit breakout

RS - Rain shed reduces flash over potential in terminations & insulators

RAB - Right angle boot seal and protect right angle terminations

SB - In line boot seal and protect legged step down transitions

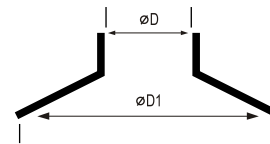
Dimension chart for 3-way insulating breakout

Part No	Expanded		Recovered	
	Hmin	Jmin	Hmax	Jmax
IB 1330	75	32	30	13
IB 2145	110	55	45	21
IB 2755	135	64	55	27



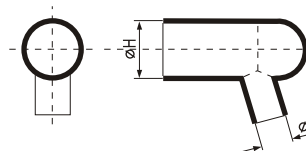
Dimension chart for rain shed

Part No	D exp(min)	D rec(max)	D1 $\pm 10\%$
RS-1	35	15	89
RS-2	52	21	122
RS-3	65	28	136
RS-4	75	28	136



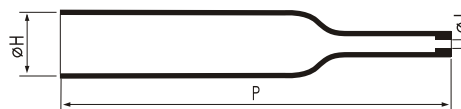
Dimension chart for right angle boot

Part No	Expanded		Recovered	
	Hmin	Jmin	Hmax	Jmax
RAB-1	75	36	35	18
RAB-2	75	50	35	26
RAB-3	95	67	35	26



Dimension chart for straight boot

Part No	Expanded Min		Recovered Max		Recovered Full Shrunk P $\pm 10\%$
	H	J	H	J	
SB-1	80	34	32	19	225
SB-2	80	58	32	19	225



All dimensions are in mm